

GEOINFORMATION MODELLING OF STYR RIVER WATER LEVELS IN FLOOD PERIOD WITHIN THE TERRITORY OF LUTSK

V. Voloshyn¹, O. Melnyk¹, Y. Melnyk², O. Vereshko²

¹Lesya Ukrainka Eastern European National University

²Lutsk National Technical University

Keywords: geoinformation modeling, approximation, digital terrain models, water level, flood process.

Formulation of the problem

Freshets and flooding is typical for all rivers in Ukraine, which watersheds are characterized by irregularity of falling atmospheric precipitation.

The power of floods is largely depends on the amount, intensity and duration atmospheric precipitations or water supply in the snow cover and melt water formation intensity [1].

Flood - phase of the hydrological regime of the river, which is characterized by fast, relatively short-lived increase of water levels in the mainstream during heavy rains, prolonged rains, heavy snow melt during the thaw, which is imposed on the rain. Floods in Ukraine is a common natural phenomenon that repeats periodically. However, in some cases it becomes disastrous signs, entails the destruction of dams and buildings, loss of life, significant financial loss.

In an average year in the rivers of Volyn passes from one to three floods with going beyond the limits of the floodplain. Frequencies of floods in many year cut is subordinate to certain laws, which appear in alternating periods of high and low water level, caused by global atmospheric circulation.

The territory of Stir river basin is characterized by flat topography, which complicates a quick passage of floods and causes flooding of large areas, on average, once in 2-3 years.

Economic activities which carried out with violation environmental regulations, significantly reduced the possibility of throughput of river Styr and a number of its inflows, that increased water level and the time of the floods.

The main reasons of spring floods as natural disasters (as well as the fall) is a natural (meteorological) factors that intensified by anthropogenic load of area. That is catastrophic consequences to a certain extent caused by economic activity in recent decades. Enhanced of negative consequences their catastrophic ostent contributes the location of buildings in the area permanent flooding and intensification of overland flow.

So today there is an urgent need for complex planning and implementation of immediate flood protection measures and organize economic activities in watersheds in most exposed to the ravages regions by freshets and flooding.

Communication with important scientific and practical problems

Since 1995, scientists from the Lesya Ukrainka Eastern European National University and Lutsk National Technical University performed comprehensive regional monitoring study.

Work carried out under the following programs: "Complex regional program protecting the population and territories from emergency situations of technogenic and natural character in the Volyn region in 2016-2020 years", Regional Environmental Program "Environment 2016 - 2020", Regional program for evaluation of state and clearing of major river Volyn beds, Regional program for environmental monitoring of Volyn region, Regional ecological program "Ecology - 2015 and Forecast till 2020".

Analysis of recent research and publications related to the solution of the problem

The issue of research, forecasting and modeling of floods did not lose its relevance in national and foreign scientists. Monitoring of flood processes, with the use remote sensing methods, their forecasting and GIS modeling were considered in the works [2, 3], and in combination with mathematical prediction in the works [4, 5]. Modeling using discrete Fourier series devoted several articles, including [6,7].

The practical application of geographic information systems in general and QGIS package concretely is covered in the works [8,9,10].

Questions of mathematical modeling of flood process in river Styr dedicated work [11], but geoinformation forecasting of flooding areas in the city of Lutsk was not considered that's why proposed research timely and relevant.

The main material

The frequency of floods in the multi-years cut formation is subject to certain laws, which appear in alternating periods of high and low water level, caused by global atmospheric circulation.

According to conclusions of Ukrainian Research Hydrometeorological Institute's scientists high floods repeating is possible in the following years on the rivers of the entire western region of Ukraine, that must be taken in mind in the performance measures to protect the population from the negative effects of treatment.

Volyn region characterized by flat terrain, which making it difficult to rapid completion of floods and leads to submergence of large territories, on average, once in 2-3 years.

Economic activities that are in violation of environmental regulations, significantly reduced the throughput possibility of Styr river and a number of its inflows, raising the water level and the time of the floods.

The main reasons of spring floods as natural disasters (as well as the fall) is a natural (meteorological) factors that intensified by anthropogenic load of area. That is catastrophic consequences to a certain extent caused by economic activity in recent decades. Enhanced of negative consequences their catastrophic ostent contributes the location of buildings in the area permanent flooding and intensification of overland flow.

Based on the statistical data of the Volyn Regional

Center for Hydrometeorology over the past 6 years about water level in the river Styr using a every ten days values water levels (Table. 1) we conducted mathematical modeling of fluctuations of water levels in the period within territory of Lutsk.

The post of hydrological measurements of Styr river water levels in the territory of Lutsk located on the Shevchenko street and complies an altitude 172.87 meters.

Analyzing the statistics, we can state that every year in the city of Lutsk observed 1-2 floods. So in 2011 there was a flood in February, when the water level risen to an altitude of 177.85 and in August during torrential rains when the water level has increased from 2.74 m to 3.84 m. The 2012 spring flood was observed in March with the maximum water level 177.05 m, and during the September rains, the water level has increased from 3.13m to 3.77 m. In 2013 on April 15 was observed a record

Table 1

The average ten-day water level of the river Styr within the territory of Lutsk for 2011-2016.

Ye ar	Dec ade	Water levels on a monthly, cm											
		I	II	III	IV	V	VI	VII	VIII	IX	X	XI	XII
2011	I	419,40	491,10	444,80	391,10	336,90	260,00	289,40	375,70	330,50	269,80	264,60	265,50
	II	458,10	485,00	394,90	382,50	333,90	287,60	311,10	379,00	279,70	266,90	261,80	272,10
	III	481,45	483,75	428,91	358,00	304,82	271,40	302,82	351,64	271,40	270,82	263,60	285,18
2012	I	282,20	297,90	398,70	349,40	327,40	291,50	325,60	291,20	324,00	349,90	334,70	286,60
	II	271,10	293,60	365,40	359,20	329,30	352,30	300,40	313,70	317,30	339,70	333,30	309,70
	III	291,91	343,00	342,45	351,20	298,55	356,20	300,55	337,00	352,60	339,73	310,00	341,82
2013	I	349,70	421,70	443,80	524,20	533,50	451,90	409,30	349,20	276,60	331,50	326,60	305,80
	II	380,70	441,60	440,80	603,50	492,10	464,90	364,10	280,90	294,30	319,50	305,30	294,30
	III	375,36	453,63	484,82	586,80	443,91	457,50	364,36	277,36	330,90	327,55	307,40	294,18
2014	I	304,70	346,70	365,50	285,30	267,50	352,10	289,00	261,30	270,90	267,10	259,20	247,60
	II	300,90	365,70	331,00	286,00	283,30	360,20	295,60	262,40	265,80	273,00	261,70	243,20
	III	351,91	379,63	325,82	285,30	295,18	365,50	271,55	263,91	272,60	256,55	249,90	266,00
2015	I	264,80	279,70	272,10	282,30	248,20	306,40	244,30	245,40	241,50	257,40	246,00	253,40
	II	297,90	258,40	277,20	275,10	255,40	260,30	235,80	235,90	242,20	257,80	244,90	252,90
	III	291,55	260,38	275,09	254,30	294,18	250,70	244,00	241,64	240,30	264,18	254,20	252,82
2016	I	270,40	298,70	302,80	266,40	256,80	254,60	273,50	275,30	247,30	245,00	292,00	327,00
	II	275,70	289,50	291,30	272,10	264,00	259,30	280,80	275,60	240,10	255,80	291,30	343,00
	III	280,55	298,00	272,64	278,90	268,55	269,00	288,91	261,73	237,80	259,45	326,50	328,55

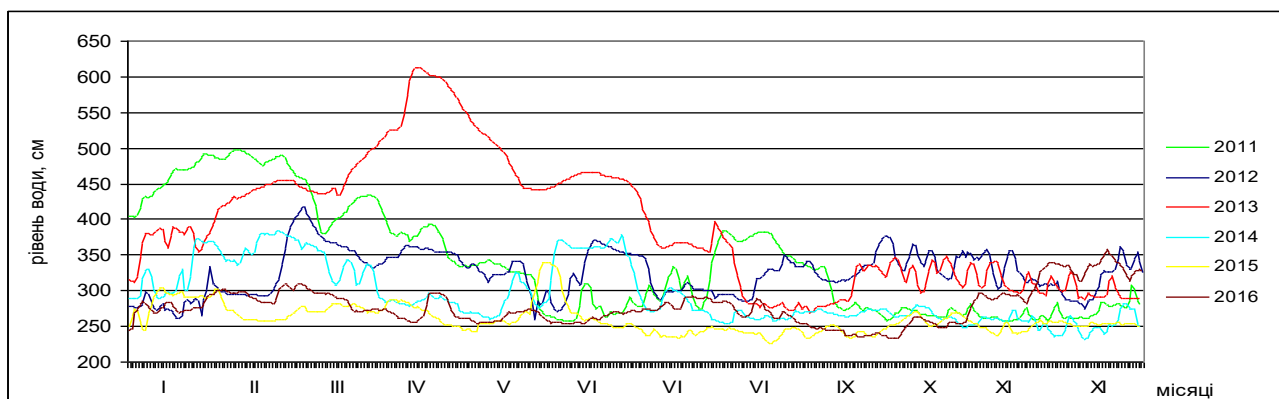


Fig. 1. Dynamics of in water levels on the river Styr in the territory of Lutsk for 2011-2016.

spring flood, when the water level reached 179.00 meters mark, and during September and October rainy season the water level has increased from 2.69 meters to 3.48 meters. In 2014 floods was registered in February and June, when over three decades the water level rising from mark 2.89 m to 3.84 m and 2.77 m to 3.78m. In 2015, during the flood in the month of May, the water level risen from a mark 175.59 m to 176.27 m. In 2016 on the territory of Lutsk was observed autumn flood, when in the second week of November, the water level began to rise from the 2.81 m mark to a mark of 3.58 on December 18.

Fluctuations of water levels in the river Styr in the past six years is shown in Figure 1.

The mathematical model of water levels on the river Styr within the territory of Lutsk is based on the creating a partial Fourier series [6,7] for discrete values of middle-ten-day water levels values during the period 2011-2016 years.

Як показали модельні обчислення, характер коливання рівнів води за вказаний період апроксимується поліноміальною трендовою складовою виду:

$$H(t) = \sum_{i=0}^k a_i t^i, \quad (1)$$

where $H(t)$ - value of the Styr river water level; a_i - coefficients of polynomial trend; t — time variable.

As a result of processing every ten days values of water levels fluctuations, we came to the conclusion that trend component of Styr river water levels fluctuations in the study period sufficient present as a 3 power polynomial.

In the process of mathematical treatment we received a trend curve type:

$$H(t) = 0.00005t^3 - 0.01689t^2 + 1.06083t + 340.98571 \quad (2)$$

For a more detailed study of water levels fluctuations present the deviations of observations from the values which have received the trend curve (2) in a finite Fourier series:

$$\begin{aligned} \bar{h}(t) &= a_0 + \sum_{k=1}^{30} [a_k \cos(kt) + b_k \sin(kt)], \\ a_j &= \frac{2}{n} \sum_{i=1}^n (h_{i_\Phi} - h_{i_T}) \cos(jt), \\ b_j &= \frac{2}{n} \sum_{i=1}^n (h_{i_\Phi} - h_{i_T}) \sin(jt), \\ a_0 &= \frac{\sum_{i=1}^n (h_{i_\Phi} - h_{i_T})}{n} \end{aligned} \quad (3)$$

where h_{i_Φ} - the actual value of water

h_{i_T} - the value of water received from the trend component approximating function (2).

Within the above, the mathematical model of water levels values fluctuations in river Styr during the period from 2011 to 2016 will be as follows:

$$h(t) = H(t) + a_0 + \sum_{k=1}^{30} [a_k \cos(kt) + b_k \sin(kt)] \quad (4)$$

Proposed mathematical model we used for short-term forecasting of the flood processes on Styr river in the territory of Lutsk. Graphic interpretation of modeling and forecasting at the beginning of 2017 are presented in Figure 2. As shown in Fig. 2 the spring flooding is forecast in February and March with the maximum water level 4.20 m, corresponding to an absolute mark of 177 m.

Further research has focused on identifying areas of flooding within the territory of Lutsk.

To build the relief of Lutsk were used files matrices of heights SRTM v.4, obtained from <http://mapgroup.com.ua> [12] and the Geological Society of the United States [13]. Data processing and visualization of the results was performed using a free open source geographic information system QGIS [14] in the current at the time of writing long-term support version 2.14.11 (LTR). This software is distributed under license GNU General Public License [15]

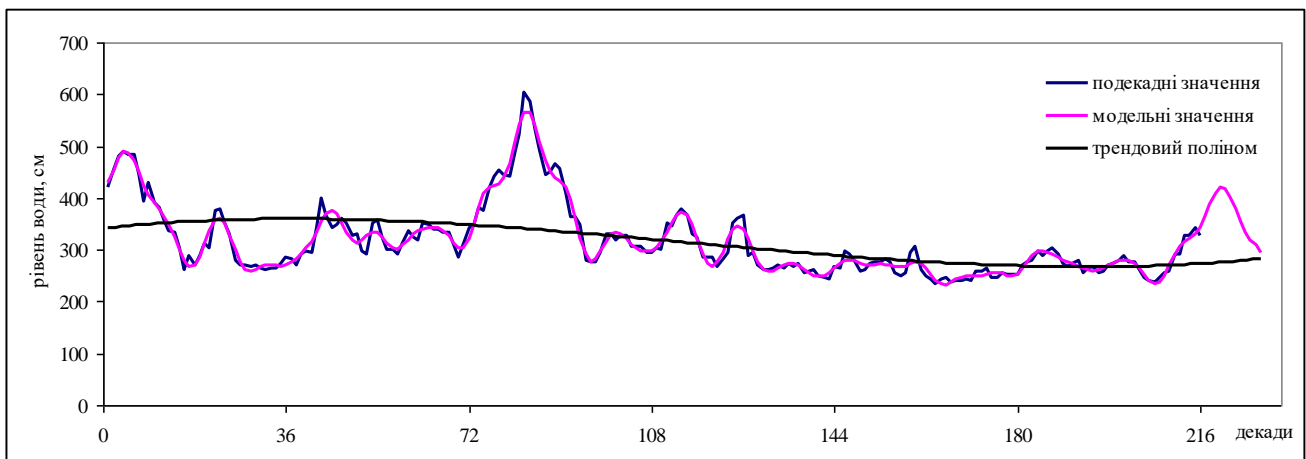


Fig. 2. Mathematical model for approximation of every ten days water levels of the river Styr on the Lutsk post observation

SRTM (Shuttle Radar topographic mission) [16] - an international mission to obtain digital elevation model (DEM) data of the Earth. Terrain capturing was carried out in February 2000 on board the space shuttle using interferometric radar cameras and two radar sensors SIR-C and X-SAR installed on board. During these works was lifted about 12 terabytes of radar data after processing are obtained matrix of heights, covering land area of 60 ° N to 54 ° S. and some areas of the sea. SRTM data exist in several versions: the previous (version 1, 2003) and final (version 2, February 2005). The final version passed additional processing, allocation of coastlines and water bodies, filtering false values. SRTM data are distributed in several versions - a grid of cell size 1"x1" and 3"x3" (angular seconds). SRTM data with cell size 1 "x1" (ie, spatial resolution 30 m) is more accurate, but unfortunately only available in the United States. In the rest of the Earth's surface is publicly available SRTM data with cell size 3 "x3" and declared accuracy below 16 m.

The accuracy of SRTM matrix meets the criteria LE90 (quantities which are probability of 90% will not exceed height deviation in terms of its true value). Elevation value accuracy approximate to height derived from topographic maps scale 1: 100 000. Given the systematic errors a possible to increase the accuracy of SRTM elevation. SRTM elevation matrix can be used to create orthophotos at scale 1:25 000 and smaller in areas of flat and hilly terrain. Assessment of accuracy SRTM elevation matrix described in detail in [17,18].

In the first stage data was obtained by the vector boundary of Lutsk according to City Master Plan approved by the The decision of Lutsk City Council №42 / 1 dated 24.06.2009.[19]. For flood process modeling we have made vector riverbeds of Styr, Sapalayivka and Kichkarivka by images obtained from the service Google Maps [20] valid for 10.04,2014.

To reduce processing time heights files were circumsised on the territory of Lutsk. According to contours SRTM has been allocated isolines in the study area in increments of 5 meters, graphically relief was recorded using a single-channel pseudocolor map . For better illustrative purposes of flooding areas in territory of Lutsk was used a picture from Google Maps service [20], which was based on a background (Fig. 3).

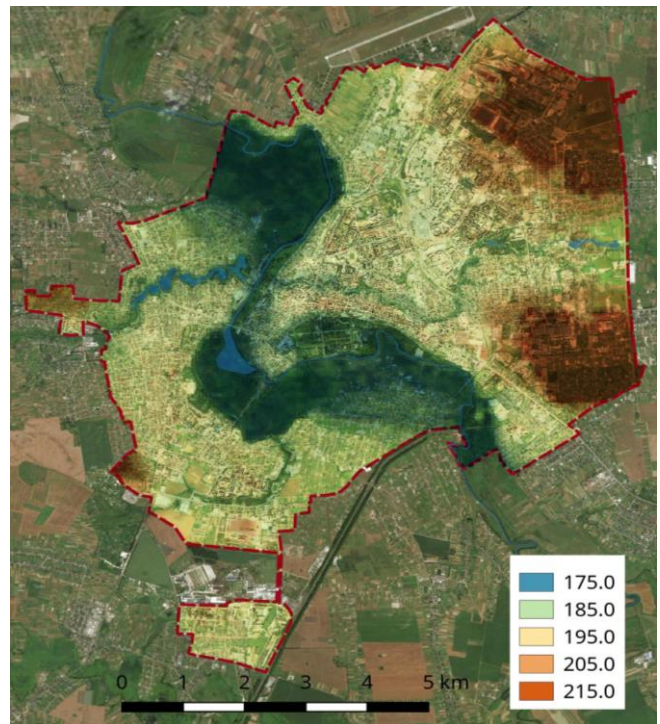


Fig. 3. Output territory of Lutsk received in geographic information system QGIS.

Further, we have decided to simulate the maximum level of flood water level in the Styr river as at April 15, 2013, when the water level reached 179.00 meters mark. Graphically the model shown in Fig. 4.

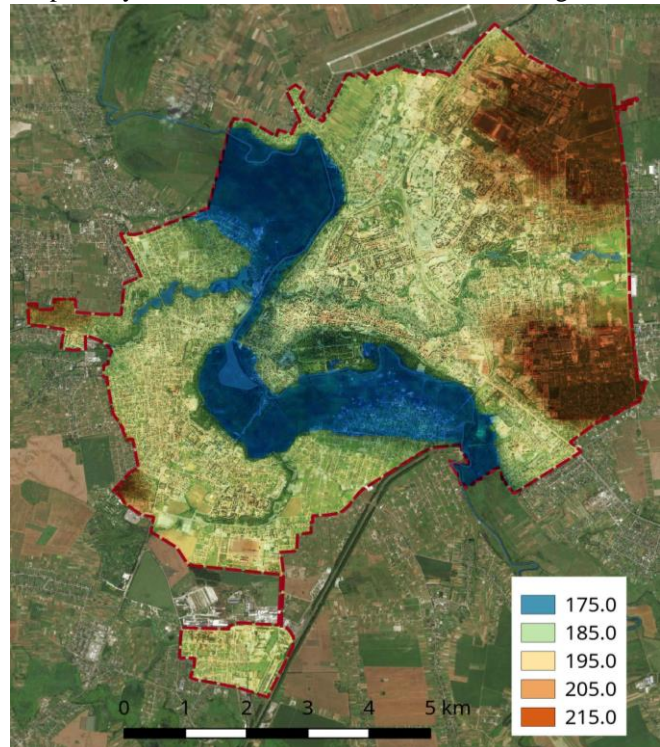


Fig. 4. Simulating of maximum flood levels as at April 15, 2013 when the water level in the river Styr 179.00 m.

Based on the data of short-term flood process forecasting in March and April months we conducted visualization of the results using geographic information system QGIS. Graphically, this model is shown in Figure 5.

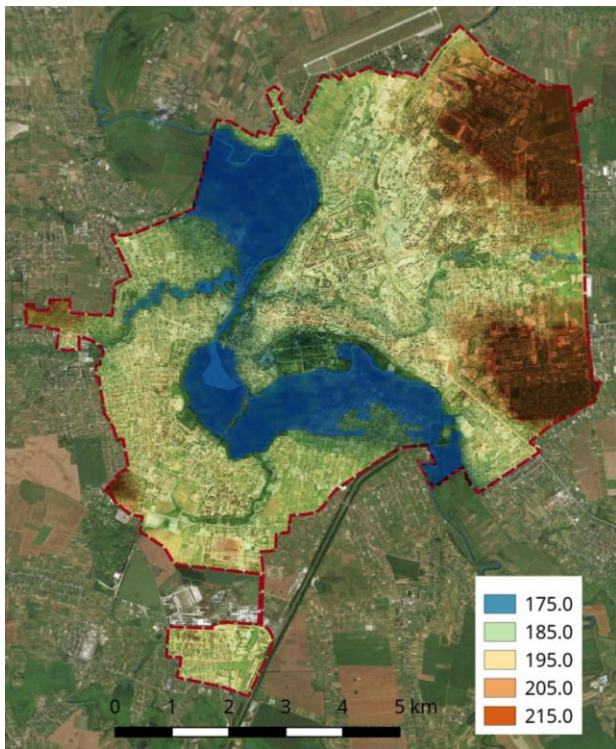


Fig. 5. Simulation of flood forecast as of February-March 2017 when the water level in the river Styra 177.00 m.

Conclusions

Based on the analysis of water levels statistical data on the river Styra by Volyn Regional Center for Hydrometeorology for 2011-2016 year we proposed a mathematical model which is based on the building a partial Fourier series for discrete values of the average ten-day water levels values. This mathematical model is the basis of short-term flood processes forecasting whereby forecasted the spring flood in February-March 2017 with the maximum water level 4.20 m, corresponding to an absolute mark of 177 m. The results of mathematical processing were the basis for geoinformation simulation of flooding areas using remote sensing data that are publicly available. Used in article set of statistical and geospatial data has great potential for further use in modeling the processes of natural and technogenic origin.

Література

1. Ковальчук І. Регіональний еколого-геоморфологічний аналіз /І Ковальчук. – Львів: Інститут Українознавства, 1997. –440 с.
2. Дорожинський О. Фотограмметричний моніторинг повеневих процесів /О. Дорожинський, Р. Тукай // Зб. Сучасні досягнення геодезичної науки та виробництва. – Львів, 2011. – Випуск 2 (22). – С. 150-154.
3. Y. B. Liu. Flood Modeling for Complex Terrain Using GIS and Remote Sensed Information /Y. B. Liu, F. De Smedt// Water Resources Management, 2005. №19. -р. 605–624.
4. W.H. Maat. Simulating discharges and forecasting floods using a conceptual rainfall-runoff model for the Bolivian Mamoré basin./Maat, W.H.// Master thesis of

Civil Engineering and Management. University Of Twente, March 2015, 83 p.

5. G. T. Aronica1. Flash floods and debris flow in the city area of Messina, north-east part of Sicily, Italy in October 2009: the case of the Giampileri catchment /Aronica1 G. T., Brigand'1 G., Morey N.// Nat. Hazards Earth Syst. Sci., 12. 2012. –р. 1295–1309.

6. Волошин В.У. Моделювання вертикальних деформацій ґрунтової греблі водосховища Хмельницької АЕС /Волошин В.У., Мельник О.В.// Зб. Сучасні досягнення геодезичної науки та виробництва.-Вип.23.-Львів,-2012. С.132-136

7. Мельник О.В. Апроксимація та прогнозування переміщень контрольних точок ґрунтових гребель із використанням рядів Фур'є / Мельник О.В., Мельник Ю.А.// Международный научный журнал "ScienceRise".- Харків: НПП ЧП «Технологический Центр» вип. 3(8) 2015.- С.53-57.

8. M.S.I.I. Amir. Watershed Delineation and Cross-section Extraction from DEM for Flood Modelling. / Amir M.S.I.I., Khan M.M.K., Rasul M.G., Sharma R.H., Akram F.// 19th Australasian Fluid Mechanics Conference Melbourne, Australia 8-11 December 2014

9. P. J. Knight. Application of flood risk modelling in a web-based geospatial decision support tool for coastal adaptation to climate change. / Knight P. J., Prime T., Brown J. M., Morrissey K., Plater A. J.// Nat. Hazards Earth Syst. Sci., 15. 2015. –р. 1457–1471.

10. Saikat Maiti. Development of hydrological modeling system for flood peak estimation using open source geospatial tools/ Saikat Maiti, Praveen K Thakur, Prasun K Gupta. // OSGEO-India: FOSS4G 2015 - Second national conference "Open Source Geospatial Tools in Cclimate Change Research and Natural Resources Management" 8-10th june 2015.

11. Шостак А. Моделювання і прогнозування рівнів води в паводковий період в межах м.Луцька / А.В. Шостак, О.В., Верешко, В.У. Волошин // Містобудування та територіальне планування: Зб.наук.пр. –К., КНУБА, 2011. –Вип. 40, Ч.2. –С.562-568.

12. [SRTM \(ЦМР\) Волинської області](http://mapgroup.com.ua/services/32-dem-ukraine/87-srtm-tsmr-volynskoj-oblasti). Режим доступу: <http://mapgroup.com.ua/services/32-dem-ukraine/87-srtm-tsmr-volynskoj-oblasti> (дата звернення: 25.01.2017). – Назва з екрана.

13. U.S. Geological Survey. Режим доступу: <https://earthexplorer.usgs.gov> (дата звернення: 25.01.2017). – Назва з екрана.

14. QGIS. Вільна географічна інформаційна система з відкритим кодом. Режим доступу: <http://www.qgis.org/uk/site/index.html> (дата звернення: 25.01.2017). – Назва з екрана.

15. GNU General Public License. Режим доступу: <http://www.gnu.org/licenses/gpl.html> (дата звернення: 25.01.2017). – Назва з екрана.

16. Shuttle Radar Topography Mission. Режим доступу: https://en.wikipedia.org/wiki/Shuttle_Radar_Topography_Mission (дата звернення: 25.01.2017). – Назва з екрана.
17. Карионов Ю.И. Оценка точности матрицы высот SRTM /Ю.И. Карионов// Геопрофи №1, 2010, ООО «Информационное агентство «ГРОМ», с. 48-51.
18. Jarvis, Andy. Practical use of SRTM data in the tropics: Comparisons with digital elevation models generated from cartographic data /Andy Jarvis, Jorge Rubiano, Andy Nelson, Andrew Farrow and Mark Mulligan// Cali, CO : Centro Internacional de Agricultura Tropical (CIAT), 2004. 32 p. (Working document no. 198)
19. Рішення Луцької міської ради від 24.06.2009 №42/1 Про затвердження генерального плану міста луцька режим доступу: <http://www.lutskrada.gov.ua/pro-zatverdzhennya-generalnogo-planu-mista-lucka>. (дата звернення: 25.01.2017). – Назва з екрана.
20. Google Maps. Режим доступу: <https://www.google.com/maps/> (дата звернення: 25.01.2017). – Назва з екрана.

Geoinformation modelling of Styr river water levels in flood period within the territory of Lutsk

V. Voloshyn, O. Melnyk, Y. Melnyk, O. Vereshko

Research results of changing water levels on the river Styr and areas of flooding within the city of Lutsk are presented in the article The mathematical model of short-term forecasting of water level in flood period on the river Styr with implementation of geoinformation modeling of flooded areas using remote sensing data is proposed.